

Enhance Your Chance: What You Need to Know to be Competitive in the FY23 EPA MARC Grant Competition Webinar

October 20, 2022

National Technical Assistance to Brownfields (TAB)



GOALS FOR TODAY'S WEBINAR

Attendees will hear:

- Special considerations for each type of application – Multipurpose, Assessment, Cleanup, and Revolving Loan Fund
- Hints for Writing Each Section of IV.E. – Narrative/Ranking Criteria
- Available TAB assistance for grant writing



WEBINAR GROUND RULES

- Everyone except speakers will be muted during presentation.
- If you're having technical difficulties, please contact Dan Livingstone at dlivings@njit.edu.
- Please submit questions via the Q&A pane and address to "Everyone."
- A recording of the webinar along with the slides will be available after the webinar at the KSU TAB website, www.ksutab.org.
- We appreciate your feedback – please respond to the post-webinar evaluation questions.



TODAY'S PRESENTERS



Joelle S. Greenland, AICP is a Senior Planning Consultant with CCLR and is the technical lead for Region 10. She has been in the brownfields arena for over 30 years and her projects have won local and national awards, including a Phoenix Award. As a certified planner, Joelle has worked in both private and public sectors, securing millions in brownfields funding, and has created and managed robust brownfields programs, most recently for Adams County, Colorado where she was the Community Development, Brownfields and Long Range Planning Manager. A published author and presenter, she has a BS in Biology from University of Richmond and a Masters in Urban and Regional Planning with an environmental emphasis from the University of Colorado.

Carrie M. Staton is the Director of the Northern WV Brownfields Assistance Center at West Virginia University. Carrie provides strategic direction and oversight for the Center and its programs, including development and management of internal processes; program development and implementation; financial and administrative oversight; and partnership development and management. She also manages programs and projects related to community engagement, education, research, and collaborative redevelopment. She has published case studies on brownfield redevelopment in industry publications and textbooks, and has presented at national and international conferences on brownfields and community development. She has also coauthored published research in public administration journals and an edited volume on organizational management.



TODAY'S PRESENTERS



Cailyn Bruno has 16 years in the environmental industry and has experience in due diligence, investigations, and remediation. She has a New York PG license and is a New Jersey Licensed Site Remediation Professional. Her technical experience has primarily been in groundwater characterization, hydrogeology, and environmental geochemistry. She is a Project Manager at NJIT TAB for Region 2.

Beth Grigsby is a Licensed Professional Geologist with over 30 years of experience providing environmental technical assistance to local government agencies, regional entities, non-profits, and private stakeholders with specialization in the acquisition, disposition, and redevelopment of contaminated properties. She serves as the KSU TAB Coordinator for EPA Region 5. She draws upon her past local government experience, private consulting, and TAB experience to provide technical assistance. As an expert in the brownfields industry, she has extensive community outreach experience and is accustomed to collaborating with diverse audiences and stakeholders to maximize successful brownfields revitalization and redevelopment efforts. She has assisted numerous communities with EPA Brownfields grant writing strategies as well as leveraging other resources towards the success of their brownfields program.



TODAY'S PRESENTERS



Dr. Nefeli Bompoti is an Assistant Research Professor in the Department of Civil and Environmental Engineering at the University of Connecticut. Dr. Bompoti serves as the Project Manager of the University of Connecticut Technical Assistance for Brownfields Program EPA Region 1 where she assists communities with brownfield redevelopment projects in New England, collaborates with partners and state agencies, mentors students, and conducts program outreach. She received a Ph.D. in environmental engineering from the University of Connecticut, a M.Sc. in water resources science and technology and a Diploma in civil engineering from the National Technical University of Athens, Greece.



CONSIDERATIONS FOR EACH TYPE OF GRANT APPLICATION:

- MULTIPURPOSE
 - ASSESSMENT
 - REVOLVING LOAN FUND
 - CLEANUP
-

Eligibility – All Grants

State, local and tribal government

General purpose units of local government

Regional council or redevelopment agencies

Non-profit organizations

Quasi-governmental agencies



FY23 Eligibility Chart for Multiple Applications

I AM APPLYING FOR	In FY23, can I also apply for...?							
	Multipurpose Grant	Community-wide Assessment Grants for States and Tribes	Community-wide Assessment Grant	Assessment Coalition Grant (Lead)	Non-Lead Member of an Assessment Coalition	RLF Grant	Non-Lead Member of an RLF Coalition	Cleanup Grant
Multipurpose Grant	N/A	No	No	No	No	Yes (Choose One Type)		No
Community-wide Assessment Grants for States and Tribes	No	N/A	No	No	No	Yes (Choose One Type)		
Community-wide Assessment Grant	No	No	N/A	No	No	Yes (Choose One Type)		
Assessment Coalition Grant (Lead)	No	No	No	N/A	No	Yes (Choose One Type)		
Non-Lead Member of an Assessment Coalition	No	No	No	No	N/A	No	Yes	No
RLF Grant	Yes (Choose One Type)				No	N/A	No	No
Non-Lead Member of an RLF Coalition	Yes (Choose One Type)					No	N/A	Yes
Cleanup Grant	No	Yes (Choose One Type)			No	No	Yes	N/A



RECLAIM. CONNECT. TRANSFORM.

FY23 Eligibility Chart for Existing Grant Recipients

MY ORGANIZATION CURRENTLY HAS		In FY23, can I also apply for...?							
		Multipurpose Grant	Community-wide Assessment Grants for States and Tribes	Community-wide Assessment Grant	Assessment Coalition Grant (Lead)	Non-Lead Member of an Assessment Coalition	RLF Grant	Non-Lead Member of an RLF Coalition	Cleanup Grant
Multipurpose Grant	Must draw down 70% of each MP Grant	Yes	Must draw down 70% of each MP Grant	Must draw down 70% of each MP Grant	Not eligible	Yes	Yes	Must draw down 70% of each MP Grant	
Community-wide Assessment Grants for States and Tribes	Not eligible	Not eligible	Not eligible	Not eligible	Not eligible	Yes	Yes	Yes	
Community-wide Assessment Grant	Must draw down 70% of each Assessment Grant	Yes	Must draw down 70% of each Assessment Grant	Must draw down 70% of each Assessment Grant	Not eligible	Yes	Yes	Yes	
Assessment Coalition Grant (Lead)	Must draw down 70% of each Assessment Grant	Yes	Must draw down 70% of each Assessment Grant	Must draw down 70% of each Assessment Grant	Not eligible	Yes	Yes	Yes	
Non-Lead Member of an Assessment Coalition	Yes	Yes	Yes	Yes	Yes	Yes	Yes	Yes	
RLF Grant	Yes	Yes	Yes	Yes	Not eligible	Not eligible	Not eligible	Yes	
Non-Lead Member of an RLF Coalition	Yes	Yes	Yes	Yes	Yes	Not eligible	Not eligible	Yes	
Cleanup Grant	Yes	Yes	Yes	Yes	Not eligible	Yes	Yes	Yes	

Note: Applicants must also meet all threshold criteria outlined in Section III. of the RFA. If you plan to apply for more than one grant type, please refer to the FY23 MARC Grant Eligibility Chart for Multiple Applications chart to determine which grant(s) are available to you.



ASSESSMENT GRANTS

Type	Funding Amount	Performance Period	Eligible Activities
Community-wide	Up to \$500,000 (no waiver limit)	4 Years	inventory, characterize & assess sites; revitalization planning; site-specific cleanup & reuse planning; community involvement
Community-wide for States & Tribes	Up to \$2,000,000 (no waiver limit)	5 years	
Coalition	Up to \$1 million	4 years	

*Site-Specific Assessment Grants are not offered this solicitation.



ASSESSMENT GRANTS

EPA ANTICIPATES AWARDING APPROXIMATELY:

- 20 Coalition Grants
- 61 Community-Wide Assessment Grants
 - 25 awards to existing/previous recipients
 - 36 awards to new recipients
- 17 State & Tribal Community-wide Assessment Grants



ASSESSMENT GRANTS

ASSESSMENT GRANTS HIGHLIGHTS



- ❖ Only one application per same state, tribal, or city government.
- ❖ Applicants must decide between either Community-wide Assessment/States & Tribes Community-wide Assessment and joining a Coalition Assessment.
- ❖ Only one state & tribal community-wide assessment grant application per eligible state and one application per tribe.



ASSESSMENT GRANTS

ASSESSMENT GRANTS HIGHLIGHTS (cont'd)

- ❖ Administrative costs (direct costs and indirect costs) are allowed up to 5% of the requested funds.
- ❖ Assessment grants do not require cost share.
- ❖ Applicants that do not have an open EPA Brownfields Assessment Grant or Multipurpose Grant must affirm they do not have an active grant.
- ❖ Current assessment grantees must meet 70% drawdown.



ASSESSMENT GRANTS

COMMUNITY-WIDE ASSESSMENT GRANTS FOR STATES AND TRIBES

Eligible Entities:

- States.
- Indian tribe other than in Alaska; including Intertribal Consortia, comprised of eligible Indian tribes.
- Alaska Native Regional Corporation, Alaska Native Village Corporation, and Metlakatla Indian Community.

**Colleges & universities are not eligible*

Grant Highlights:

- Identify at least 3 target areas and at least 5 priority sites in the application (at least 1 priority site in each target area).
- Applicants should include a mix of metro/non-metro, disadvantaged communities and communities that lack capacity to apply for and manage a grant in their application.
- Only competing against other state & tribal assessment grant applicants.
- Recipients must assess a minimum of 10 sites throughout 5-year performance period.
- Should target disadvantaged communities and communities that lack capacity to apply for and manage a grant.
- Not subject to the 70% drawdown requirement.
- Applications – 12-page narrative limit.



CHANGES TO COALITION GRANT

- Increase of funding from \$600k to \$1 million
- At least 2 sites must be assessed in each member's boundary (increase from 1)
- Target areas cannot overlap
- ***Non-lead cannot be affiliated with lead or non-lead member***
- ***Non-lead members cannot apply for community-wide OR have had a grant since 2015***
- ***Fewer points to applicants if funding does not include at least 1 non-lead coalition member that is community-based organization***



CLEANUP GRANT APPLICATIONS

- Cleanup activities
- Reuse planning
- Community Involvement
- Programmatic expenses
- Health monitoring
- Environmental insurance
- Monitoring and enforcement of institutional controls

NOTE: Cleanup Community Notification (at least 14 calendar days before application is submitted to EPA)



CLEANUP GRANT APPLICATIONS

- Applicant Eligibility: Government, Quasi Government, Regional Council, Tribe, Nonprofit (501(c)(3), Qualified Community Dev. Entity (45D(c)(1)); Nonprofit 501(c)(6); see full list Section III.A.
- No Cost Share Requirement
- Period of Performance: 4 Years
- Anticipated # of Awards: 73



CLEANUP GRANT APPLICATIONS

- Sole owner of the site by time of application
 - Fee simple title through a legal document
- The owner must have conducted all appropriate inquiries (AAI) prior to acquiring the property
 - Phase I Environmental Site Assessment not more than 180 days before property transfer.
 - The owner must not be liable in any way for contamination at the site or affiliated with any other person potentially liable for the contamination



CLEANUP GRANT APPLICATIONS

New Threshold Criteria

- Site Characteristic: Applicants must show there has been sufficient level of site characterization from ESA performed to date for remediation to begin on site(s) OR that there will be sufficient data by June 15, 2023.
- Determination must be made by state environmental authority



CLEANUP GRANT APPLICATIONS

Funding Amount	Performance Period	Estimated Number of Awards
\$500,000	4 Years	40
\$1,000,000	4 Years	25
\$2,000,000	4 years	8



CENTER FOR CREATIVE
LAND RECYCLING
RECLAIM. CONNECT. TRANSFORM.

MULTIPURPOSE GRANT APPLICATIONS

- Best for communities that have identified a discrete area with one or more brownfield sites.
- Range of activities, including:
 - Developing inventories of brownfield sites;
 - Prioritizing sites;
 - Conducting community engagement activities;
 - Conducting environmental site assessments;
 - Developing cleanup plans and reuse plans related to brownfield sites;
 - Carry out cleanup activities on brownfield sites owned by the applicant; and
 - Developing an overall plan for revitalization.



MULTIPURPOSE GRANT APPLICATIONS

- Must be the sole owner of at least one brownfield site within the target area by **November 22, 2022**, where cleanup activities may be conducted.
- Must complete:
 - At least one environmental site assessment
 - Remediation of at least one site
 - Overall plan for revitalization of target area (if this does not already exist)



MULTIPURPOSE GRANT APPLICATIONS

- Applicant Eligibility: Government, Quasi Government, Regional Council, Tribe, Nonprofit (501(c)(3), Qualified Community Dev. Entity (45D(c)(1)); Nonprofit 501(c)(6); see full list Section III.A.
- Funding Availability: Up to \$800,000
- No Cost Share Requirement
- Period of Performance: 5 Years
- Anticipated # of Awards: 17
- If applying for multipurpose, you cannot apply for assessment or cleanup grant.



REVOLVING LOAN FUND GRANT APPLICATIONS

- Capitalize revolving loans and subgrants for cleanup activities
- At least 50% of the total award amount must be used for loans & eligible programmatic costs associated with those loans.
- Only eligible entities who do not have, or are not a part of (i.e., a coalition member), an open cooperative agreement for a Brownfields RLF at the time of application may apply for an FY23 RLF Grant.



REVOLVING LOAN FUND GRANT APPLICATIONS

- Applicant Eligibility: Government, Quasi Government, Regional Council, Tribe, Nonprofit (501(c)(3), Qualified Community Dev. Entity (45D(c)(1)); Nonprofit 501(c)(6); see full list Section III.A.
- Funding Availability:
 - Community-wide - Up to \$1M
 - RLF Coalition - Up to \$1M; 1 lead + 1 or more eligible partners
- No Cost Share Requirement
- Period of Performance: 5 Years
- Anticipated # of Awards: 10
- If applying for RLF, you cannot apply for cleanup or as a non-lead member of an RLF Coalition



GENERAL APPLICATION WRITING TIPS

THRESHOLD CRITERIA

- New this year – “Contractors and Named Subrecipients”
 - *Contractors*

“Applicants that have already procured a contractor to conduct work proposed in its application must provide information to demonstrate that the procurement was conducted in compliance with applicable competition requirements, regardless of if the contractor is named in the application.”

Pass ↔ Fail



GENERAL WRITING TIPS



- Read the grant application guidelines.
- Review associated grant FAQs.
- Write your grant application with a focus on the “Evaluation” criteria versus the “Narrative” criteria.
- Quantify statements whenever possible.
- Tell a compelling story.

The Dragon & the City - Storytelling Technique



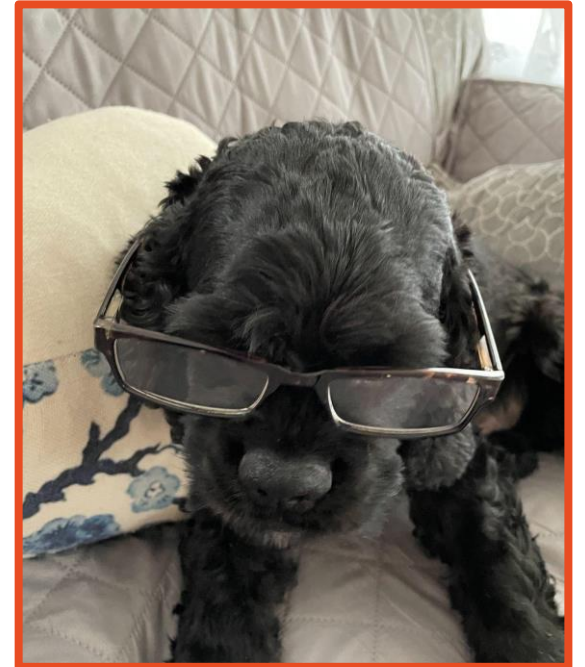
Think about your city's dragon(s)

- Environmental injustice
- Disinvestment
- Climate change
- Other threats? How has it been allowed to get this bad?
- What is the cost to the city and its people?

Brownfields are the heroes! How can they be used to defend your city, attack the dragon(s), and what is the reward?

GENERAL WRITING TIPS (con't)

- Make sure project outcomes match community needs.
- Write application as if reviewer has no knowledge of project and area.
- Get an outside reviewer that has no knowledge of the project.
- Double check all math.
- Review previous years successful applications



SECTION IV.E.1.

PROJECT AREA DESCRIPTION AND PLANS FOR REVITALIZATION

PROJECT AREA DESCRIPTION AND PLANS FOR REVITALIZATION

Assessment	Multipurpose	Cleanup	Coalition
			I.a. i. Coalition Members: Coalition should include at <i>least one non-lead</i> member that is a community-based organization or you could lose points
I.a.i. Overview of Brownfield Challenges and Description of Target Areas	I.a.i. Overview of Brownfield Challenges and Description of Target Areas	I.a.i. Overview of Brownfield Challenges and Description of Target Areas	I.a.ii. Overview of Brownfield Challenges and Description of Target Areas New!
Can have <i>more than one</i> geographic area as well as target areas ** <i>States/Tribes: minimum of 3 target areas (suggests one in metro area & one in non-metro area)</i>	One geographic area and one target area	Can have more than one geographic area as well as target areas	Identify at least one target area in each coalition member's geographic boundary. Target areas may not overlap.

PROJECT AREA DESCRIPTION AND PLANS FOR REVITALIZATION

Geographic Boundary(ies)

- Boundary(ies) in which work can be performed (formerly referred to as “jurisdiction”)
- Include discussion of brownfields **challenges/impacts w/in boundary** (not industrial/cultural history)

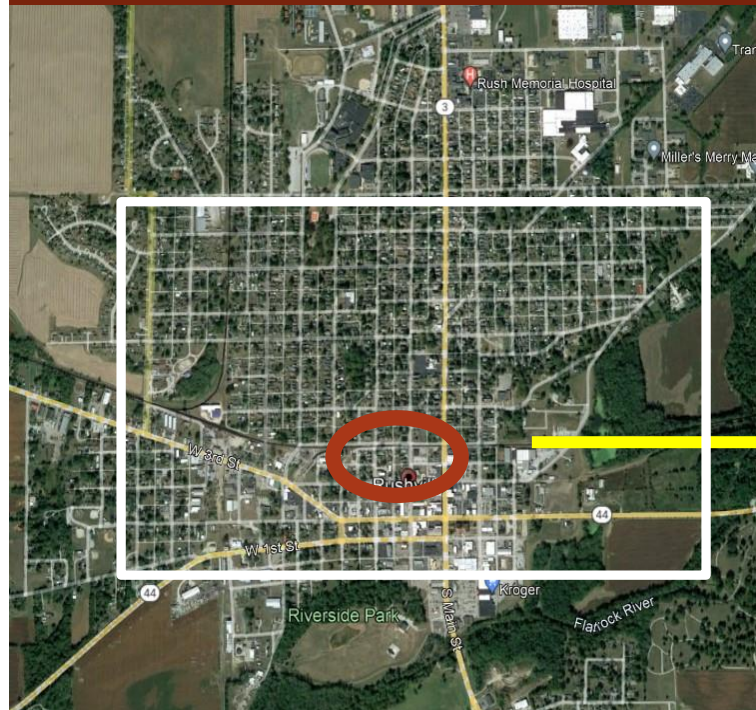


How will this grant address these challenges!!!!

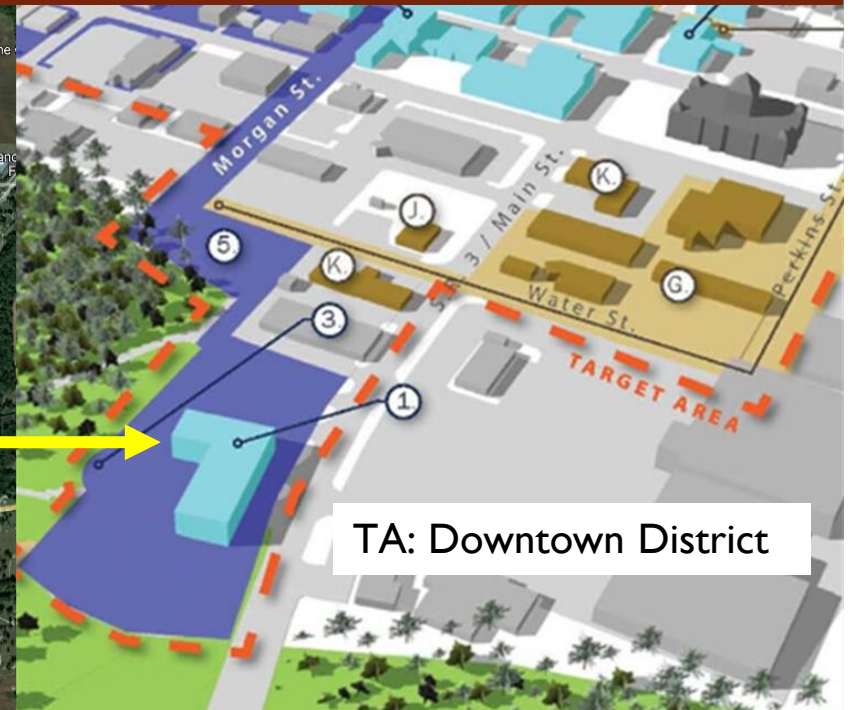
Target Area(s)

- Within the geographic boundary(ies), specific target area(s) where you plan to focus grant activities, such as a neighborhood, district, corridor, or census tract.

Geographic Boundary(ies)



Target Area (s)



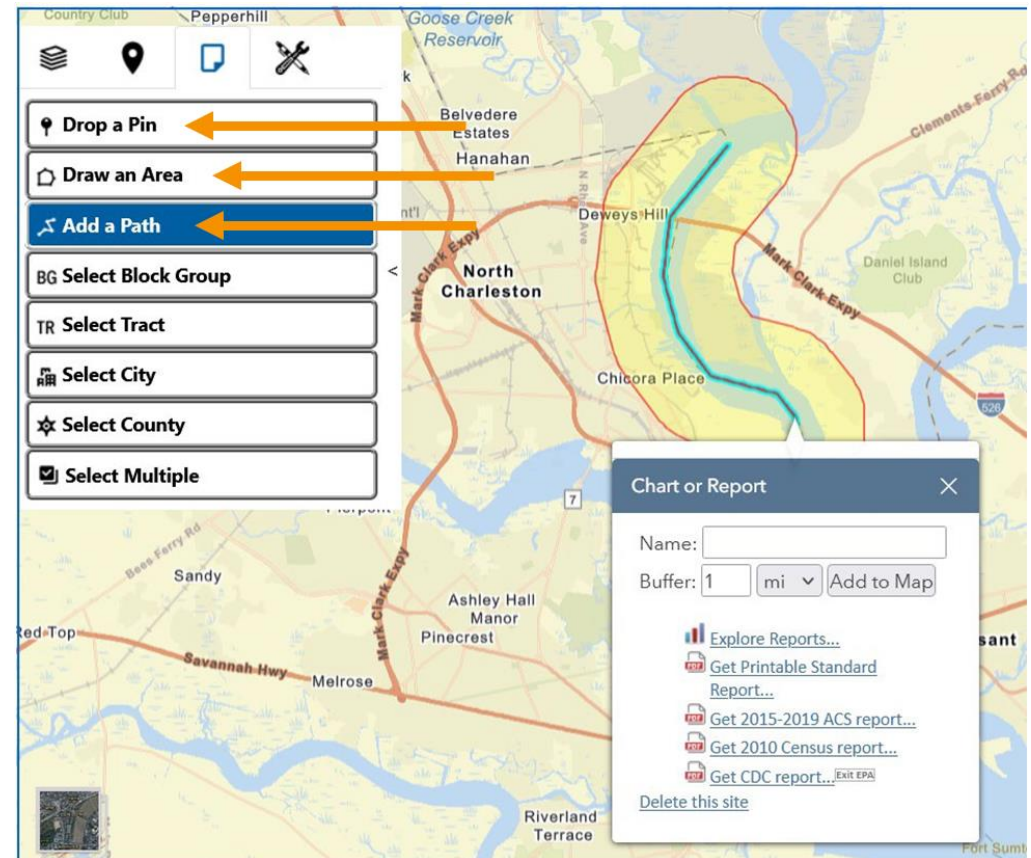
Using EJ Screen for the Project Description Section

EJ Indexes (12 indexes)

- Environmental (12 indicators)
- Socioeconomic (7 indicators)
- Health (3 indicators)
- Climate (5 indicators)
- Critical Service Gaps (3 indicators)

Ability for user to define target areas to gather more information

- Buffer around a pin
- User-drawn areas/polygons
- User-drawn paths: Impaired waters, highway segments
- Select Block Group, Tract, City, County



EJ SCREEN DATA: CITYWIDE DATA VS BLOCK GROUP DATA

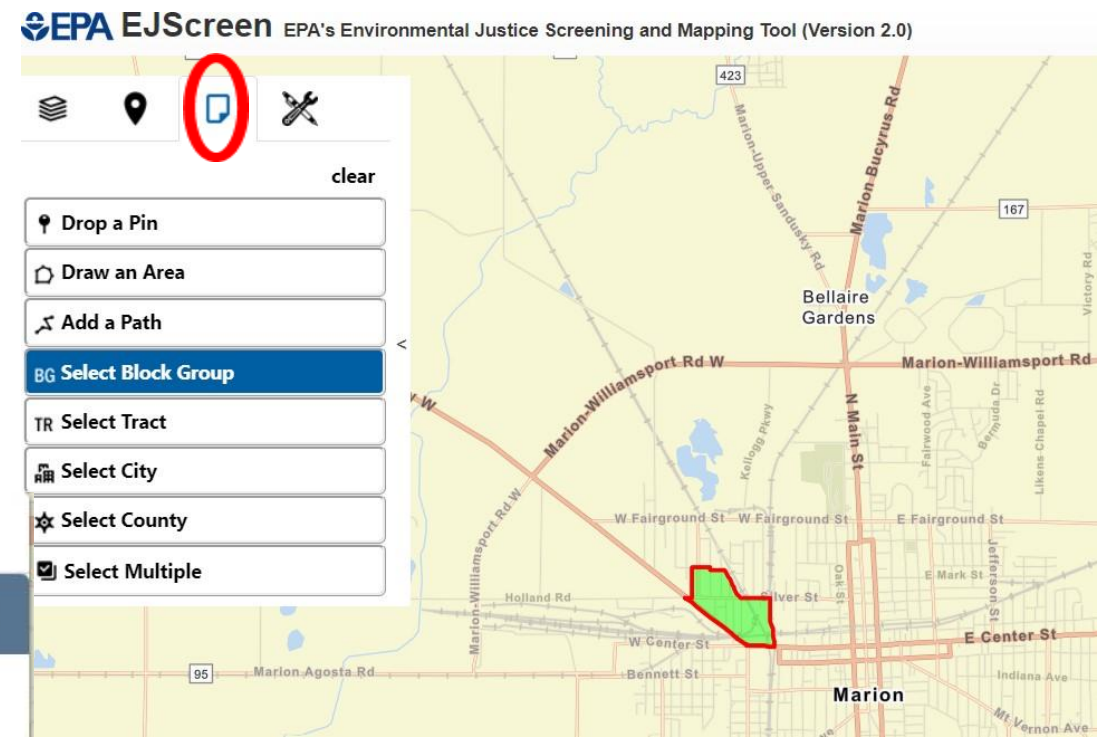
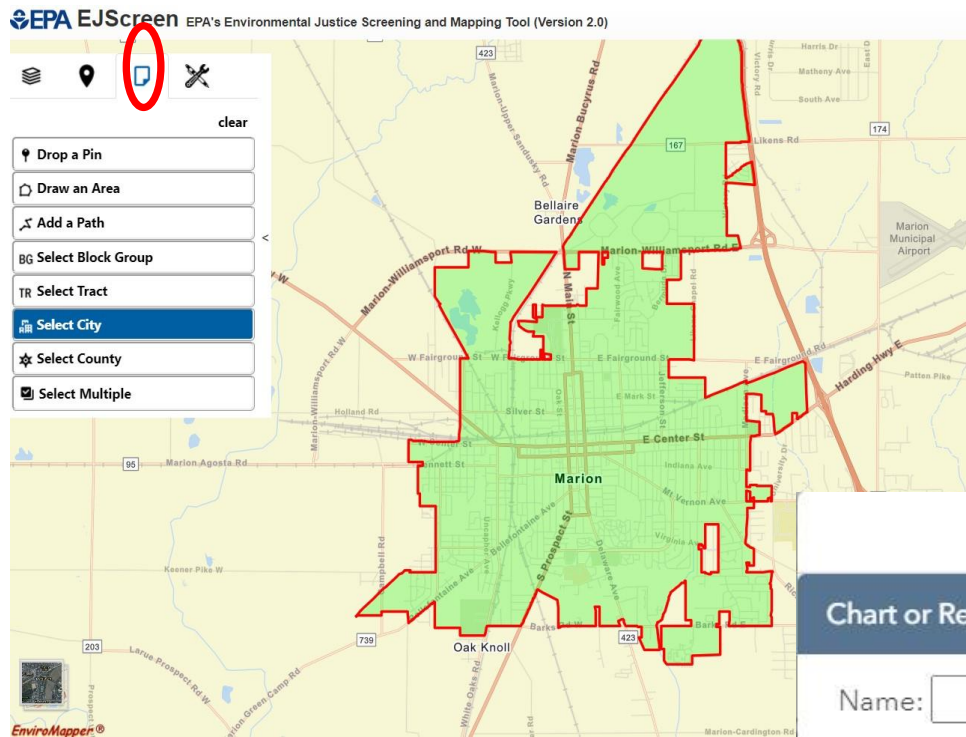


Chart or Report

Name:

- [Explore Reports...](#)
- [Get Printable Standard Report...](#)
- [Get 2015-2019 ACS report...](#)
- [Get CDC report... Exit EPA](#)

[Delete this site](#)



City Census Data vs. Site Census Block group Data

Selected Variables	Value	State Avg.	%ile in State
Socioeconomic Indicators			
Demographic Index	29%	26%	69
People of Color	17%	21%	62
Low Income	49%	31%	79
Unemployment Rate	9%	5%	81
Linguistically Isolated	0%	1%	69
Less Than High School Education	15%	10%	79
Under Age 5	6%	6%	54
Over Age 64	15%	17%	43

Selected Variables	Value	State Avg.	%ile in State
Socioeconomic Indicators			
Demographic Index	42%	26%	81
People of Color	15%	21%	58
Low Income	69%	31%	93
Unemployment Rate	12%	5%	89
Linguistically Isolated	0%	1%	69
Less Than High School Education	13%	10%	73
Under Age 5	14%	6%	96
Over Age 64	8%	17%	12

PROJECT AREA DESCRIPTION AND PLANS FOR REVITALIZATION

OVERVIEW OF BROWNFIELD CHALLENGES AND DESCRIPTION OF TARGET AREA

DESCRIPTION OF TARGET AREA

- Clearly define target area(s): neighborhood, census tract, corridor, historic district
- Quantify all *possible* brownfields in this description (#acres, #properties, etc.), include properties like vacant lots, blighted or aging buildings, historic dry cleaners, historic gas stations, etc.
- Where are your brownfields and what is the condition of neighboring properties (high crime, unsafe properties, or ecologically/environmentally sensitive areas (waterways, wetlands, etc.) –demonstrate the significance of the issue
- Describe locations--Are your sites proximal to residential areas, schools, parks, local businesses, industry
- Check out EJ Indexes, Socioeconomic Indicators such as demographic index to gain understanding of income levels, education, people of color, etc. to gain understanding of who is impacted by brownfields sites
- Are the brownfield challenges/impacts described for the geographic boundary magnified in the target area
- Area supports challenges and goals (sensitive or vulnerable populations)
- Relevant plans; Existing or planned investments



Cleanup Grants: Describe the property(ies) targeted for cleanup and known site contamination
Community-Wide (States & Tribes) At least three specific target areas (for a more favorable review, at least one in a metropolitan statistical area and at least one in a non-metropolitan statistical area)

Priority Sites--describe number, site conditions: abandoned, fenced, size, zoning, existing structures, infrastructure

*(minimum 5 sites for a state and tribes assessment grant)

Highlight one or more sites that are a priority. (include past/current uses, site conditions, # and size of structures, environmental issues. Why is the a site a priority for assessment, cleanup and redevelopment

DESCRIPTION OF PRIORITY BROWNFIELD SITES

Assessment (States & Tribes):

Describe a minimum 5 priority sites

Coalition: at least one priority site in lead member and non lead's target area

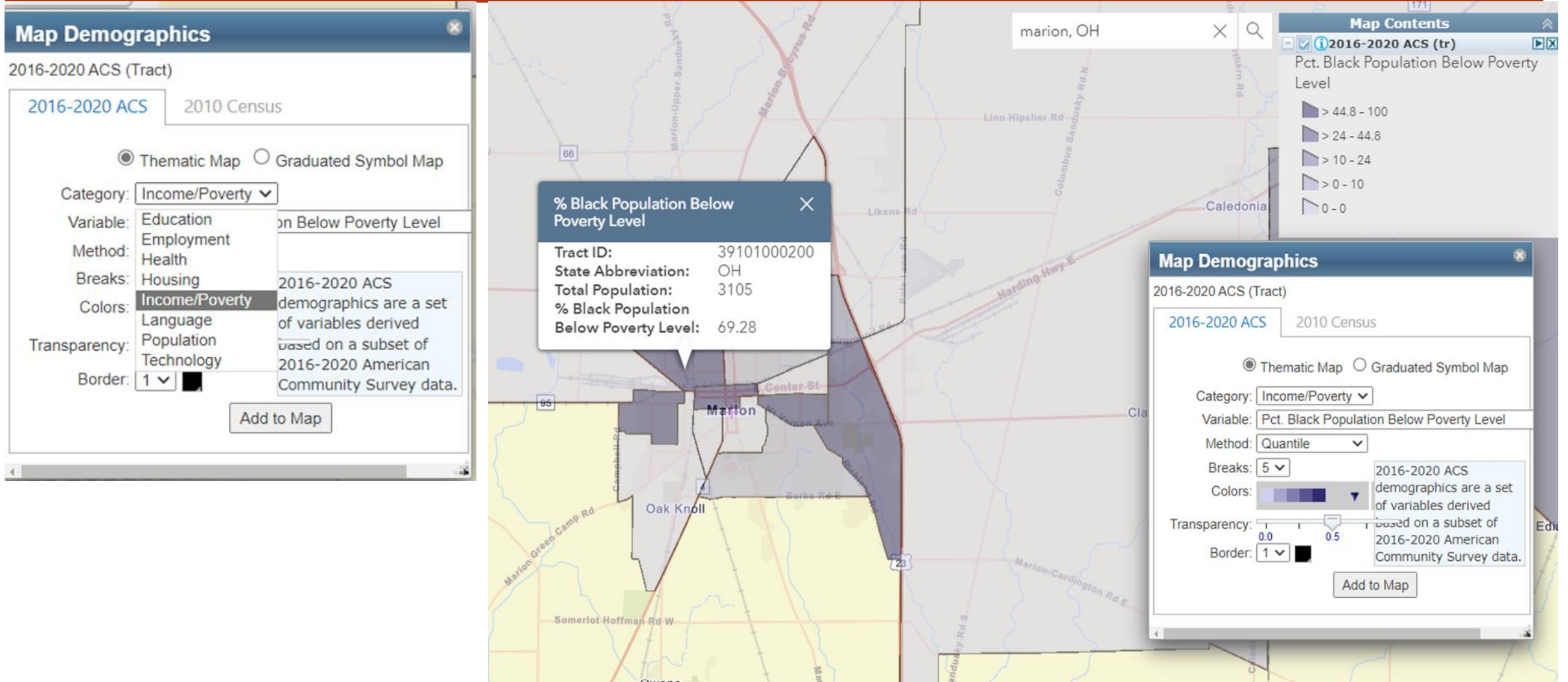
Multipurpose: Describe why site(s) are candidate for assessment, cleanup, and reuse.

Cleanup: Describe known contamination (use Phase II) Structures—removed or reused? **Exposure:** How do existing contaminants impact surrounding residents, sensitive populations, waterways

Why is your site a priority: it represents a significant health hazard; it has great redevelopment potential; redevelopment meets objectives community plans. **Where are site(s) located:** proximal to neighborhoods, sensitive populations, near sensitive eco-systems, bodies of water, in a flood plain; **What about potential contaminant impacts:** tie impacts to health issues found in area; consider groundwater/vapor intrusion impacts and stormwater run-off.

Other Factors: Is your priority site(s) impacted by mine-scarred lands or a coal-fired power plant recently closed or is closing.

Primary EJ Datasets: More Demographics



Priority Brownfield Description Example

- Gas/Auto Repair: The 1/2-acre site has operated as auto repair since 1930 and evolved to a gas station in the 1970's and is located less than 100 feet of two-story homes. Gas fueling ceased in 1999 when three 8,000-gallon Underground Storage Tanks (USTs) were removed with dated sampling protocols. There are no records associated with testing of waste oil or solvents. Potential impacts to soil, groundwater, and the river are VOCs, chlorinated solvents, metals, and PCBs. Given the age and condition of the 3600 sq. ft building on-site, asbestos and lead based paint may be present. This is priority site due to potential impacts to the surrounding neighborhood homes, the river, and location across from the City High School. The blighted site has high visibility on the White River greenway. Grant funding will address potential contaminant impacts to the surrounding area and the river. The eventual removal of the blighted buildings will improve aesthetics of the popular River greenway.





Reuse should align with challenges presented in Section IV.E.1.a.i

Describe reuse strategy or project reuse for the Priority site(s). *Do reuse strategies align with Environmental Justice, climate action, and community resilience?*

How does this reuse strategy align with government's land use and revitalization plans? Identify the Plan. Describe community's involvement with the plan.

REVITALIZATION
OF THE TARGET
AREA:

REUSE STRATEGY
AND ALIGNMENT
WITH
REVITALIZATION
PLANS

Multipurpose: *Option 1:* If Overall Plan for Revitalization exists
Option 2: If an overall plan does not exist

Cleanup: How public and project partners (including the underserved communities) involved in development of the reuse strategy/projected reuse.

Revitalization of Target Area Example

- Revitalization of these sites will support the goals of the **Downtown Morris Strategic Plan** and **FY22 Morris Annual Action Plan** by promoting sustained economic growth, new investments and jobs, safer streets, stronger healthier families, increased pride, and the removal of environmental and physical hazards from the community. The priority sites will be identified not only by the City but also **through public outreach and stakeholder input.** ... priority sites are primarily located within the fabric of disadvantaged communities...represent the legacy of environmental justice inequities. **The concentration of minority and low-income populations surrounding these brownfield sites and unknown environmental conditions disproportionately exposes these already disadvantaged communities who lack the means to relocate to environmental and physical hazards...** benefits of the assessment and redevelopment help raise these communities **out of poverty by creating jobs, developing affordable housing, increasing property values, and mitigating decades of environmental injustice.**





Focus on the Outcomes and Benefits that will take place in the Target Area and benefits Disadvantaged populations (as well as community at large)

Upon cleanup, how the proposed project/revitalization stimulates potential economic development and/or facilitates nonprofit purposes in the target area

When applicable, extent to which reuse of priority site(s) will facilitate renewable energy (wind, solar, geothermal energy) or incorporate energy efficiency measures. **Benefits:** renewable energy: revenues from land leases and taxes, electricity cost savings, job creation, reduced greenhouse gas emissions

Quantify!!! Energy/Cost benefits to sustainable reuse of buildings or structures: energy/cost benefits to avoiding new construction-mitigating noise, emissions to air, etc. Quantify benefits from **updated infrastructure** (safer with lighting, walkways, mitigation of vehicle congestion and air pollution); Sewer and Stormwater upgrades: (less local flooding, pollutant impacts).

Will displacement of residents and/or businesses take place? What is your strategy or policy to be implemented to minimize displacement (**example: eminent domain of land for development, gentrification related to market change**).
Example strategies: affordable housing or additional commercial leasing close to TA

**REVITALIZATION
OF THE TARGET
AREA: Outcomes
and Benefits of
Reuse Strategy**

New!

Revitalization of Target Area: Outcomes & Benefits Example

- The Town's overriding health and welfare concern for its community is the concentration of brownfields in the Targeted area... Remediating the brownfields will mitigate the impact these sites pose on the proximal sensitive populations, water and air quality, endangered species, and ecosystems... The cultural/heritage amenities of the creation of the park will reinforce the Town's cultural identity, history, and heritage as well as promote health and wellness in the Targeted Area. The entire Park is a sustainable means to regenerate ecology along a 3 mile stretch of the Ohio River with 50 acres of new urban forest, 150 acres of new meadow and savanna, and 250 acres of enhanced and protected urban forest...addition of 75,000 trees will help cool neighborhoods and reduce what's called the "urban heat island effect," the creation of "islands" of heat that result in a dangerous rise in temperature and disproportionately affect vulnerable populations, low-income communities and people of color...Targeted Area residents will see an increase in property values. The University of Washington reports that residences next to a larger and longer "greenbelt" area saw a 32% increase in home value on average.



Describe your **eligibility** for monetary funding from other resources and extent that grant will stimulate additional funds for assessment, remediation or subsequent reuse.

Extent to which potential key funding resources can be used to support completion of assessment, remediation, and/or reuse of the priority site(s)

STRATEGY FOR LEVERAGING RESOURCES

DO NOT DUPLICATE SOURCES DISCUSSED IN 3.A. DESCRIPTION OF TASKS/ACTIVITIES AND OUTPUTS.)

Leveraged funding should be easily identifiable including the source, activity being funded, and amount. It is important to note resources that have been secured, those that are pending, or being applied for.

Secured funding is reviewed more favorably

Consider sources of funding you are eligible for: Local, State, Federal; Economic Districts, TIF Districts, Foundations, Local Partners, CBO; TAB Resources such as Visioning, Market Studies.

CLEANUP GRANTS: STRATEGY FOR LEVERAGING RESOURCES

- ❖ i. Resources Needed for Site Characterization –secured, sought, or being sought
 - Make sure you understand the likelihood and type of characterization needed
- ❖ ii. Resources Needed for Site Remediation –secured, sought, or being sought (**Attach documentation** of secured commitment of leveraged funding for Remediation)
 - Local commitments are important and commitments by partners should be firm (with an associated value—ask for their letter of commitment)
- ❖ iii. Resources Needed for Site Reuse –secured, sought, or being sought (**Attach documentation** of secured commitments of leveraged funding for Reuse)
 - Consider all activities including demolition and construction
- ❖ iv. Use of Existing Infrastructure



Use Table in EPA guidelines for criteria i.-iii.

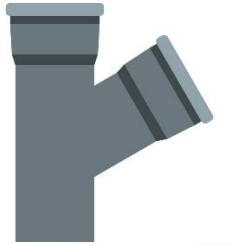
Do not duplicate sources discussed in 3.a. Description of Tasks/Activities and Outputs.



Strategy for Leveraging Resources: Use of Existing Infrastructure

❖ USE OF EXISTING INFRASTRUCTURE

- List existing infrastructure (i.e., water, sewer, gas, electric, transportation, high speed internet) and how it fits into your redevelopment plan
- What are the leveraged benefits of using existing infrastructure
- If applicable, describe the environmental benefits of infrastructure upgrades, like replacement of lead pipes or updated septic or sewer systems.
- List what infrastructure needs or upgrades will be required to meet project goals and how funding will be sought to cover it



Use of Existing Infrastructure Example

Grant-funded assessments will prompt revitalization of our priority sites within Lorain's urban core where significant infrastructure investments have been made... Priority sites have ready access to roads, water, wastewater, natural gas, electric, and broadband services...some have rail and marine commerce facilities. We are requesting planning dollars for infrastructure evaluations to fully understand current utility capacities and, if determined to be necessary, cost estimates to upgrade capacities for our planned industrial and mixed-use developments. Funding sources for those upgrades will be identified and could include programs through the Ohio Water Development Authority and the Ohio Public Works Commission... **Existing infrastructure at our priority sites is a major selling feature for prospective developers and end users...** Priority sites will also benefit from several recent infrastructure investments within the target area...\$3.9 million downtown streetscape improvements; \$6 million Route 6, West, and East Erie Avenue improvements; \$28 million Bridge improvements



SECTION IV.E.2

COMMUNITY NEED AND COMMUNITY ENGAGEMENT



Community Need

Community's Need for Funding

Financial and socioeconomic data to demonstrate the need both at the level of the geographic area, target area, and community.

Threats to Sensitive Populations

Socioeconomic, environmental, and health indicators that showcase how the community is impacted.

How this grant/project will help alleviate these issues!

Your Data Tools

EPA's EJSCREEN

- Data for demographic and environmental indicators given as maps with associated values

Climate and Economic Justice Screening Tool

- Identifies disadvantaged communities, using publicly available, consistent national datasets

EnviroAtlas

- ~500 Environmental maps

American Community Survey

- Wide range of data including demographics, economic, social, housing, health, etc.

Your Data Tools

CDC's National Environmental Public Health Tracking Network (NEPHTN)

- Data at census tract level: Prevalence of Cancer, Prevalence of Asthma in adults
- All other data at the county level, including birth defects

PLACES

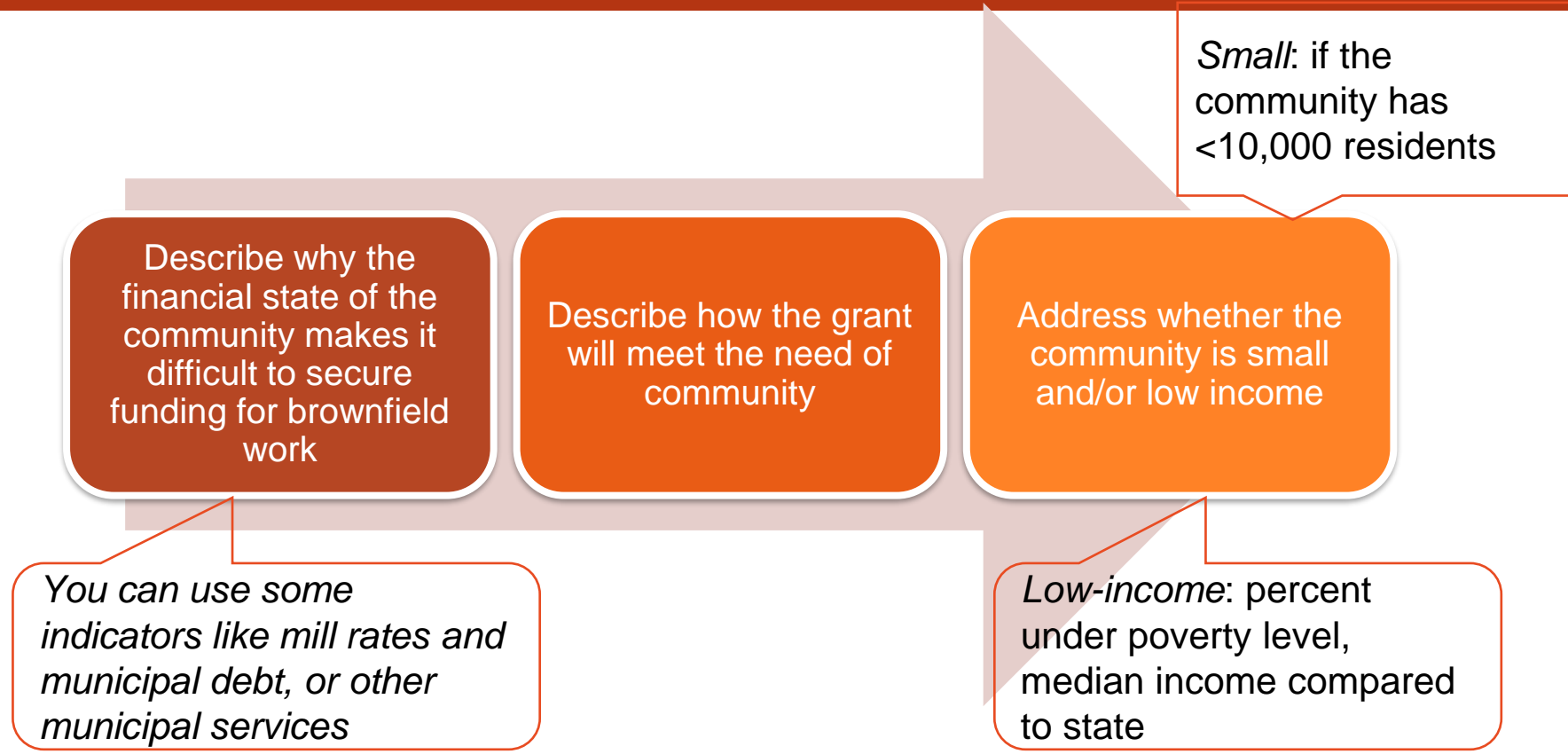
- Same cancer and asthma data as NEPHTN, additional health outcomes at census tract level
- Note that this is data from a statistical model based on a survey and actual incidence rates

State Resources

- Every state has a public health data from the State Public Health Data or local health departments



Community's Need For Funding



Make a Case for Your Community

- Inability to draw funding sources because:

Low-income populations

Small Community

Loss of tax base (mill rate, grand list, property values)

Lack of investment

Unemployment

Median Household Income

SNAP

Mention Changes and/or Comparison with neighboring towns, State, Region, or Nation

For States and Tribes: Serve communities or tribal members that do not have the capacity to apply for and manage their own Brownfields Grant



A Successful Example

The City of Brownsville does not have the ability to support the remediation and reuse of the target site given the **significant financial difficulties the community is facing**; the median household income of \$46,398 is far below the State average (\$78,444), and the per capita income also follows the same trend (\$25,857 for the City compared to \$44,496 for Connecticut)¹. The **poverty levels within the City are more than double compared to the rest of the State**, with an overall rate of 24.51% compared to the State average of 9.92%. Young people under 18 experience even higher poverty levels that climb to 40.03% in contrast to 13.31% of the state average.¹ In addition to the community's struggles, the impact of COVID-19 pandemic resulted in an almost **three times higher unemployment rate** of 13.30% in 2020 from 5% in 2019¹. The municipality is at the top one third of the towns in Connecticut with the **highest debt per capita, which has almost doubled** since 2010.¹ The **City's grand list has dropped more than 25% in 2014 but has never been able to recover**,¹ facing significant budget cuts for education and other social services. The Site has been sitting for over 20 years with no progress due to the lack of resources and funding. The census block group where the Site is located has one of the **highest percentages of low-income populations (64%) ranking at 94%ile within the State**. In a neighborhood where disadvantaged, low-income populations are facing environmental injustice for over 20 years, there is an imperative need to receive public funds for the remediation of this property.

¹Data Source Citation (EJ SCREEN or other)



Threats to Sensitive Populations

Identify Sensitive Populations

EJSCREEN

- People of Color
- Low Income
- Less than High School Education
- Linguistically isolated
- Age >65
- Age <5

American Community Survey

- Veterans
- People with Disabilities

Threats to Sensitive Populations

Health or Welfare of Sensitive Populations

- **Qualitative narrative** with respect to blight, community disinvestment, vandalism (refer to articles, social media posts, community meetings if available)
- **Quantitative narrative** on crime and social assistance indicators, substance abuse and mental health could be relevant as well

EJSCREEN

- Unemployment Rate
- Critical Service Gaps (Food Desert, Medically Underserved)

American Community Survey

- DP03 Selected Economic Characteristics
- Percent with cash public assistance income
- Percent with SNAP benefits
- Percent with no health insurance coverage
- Percent below poverty level

Threats to Sensitive Populations

Greater Than Normal ***Incidence of Disease and Adverse Health Conditions***

Low Life Expectancy

- Average Life Expectancy data (EJSCREEN)
- [U.S. Small-area Life Expectancy Estimates Project](#)

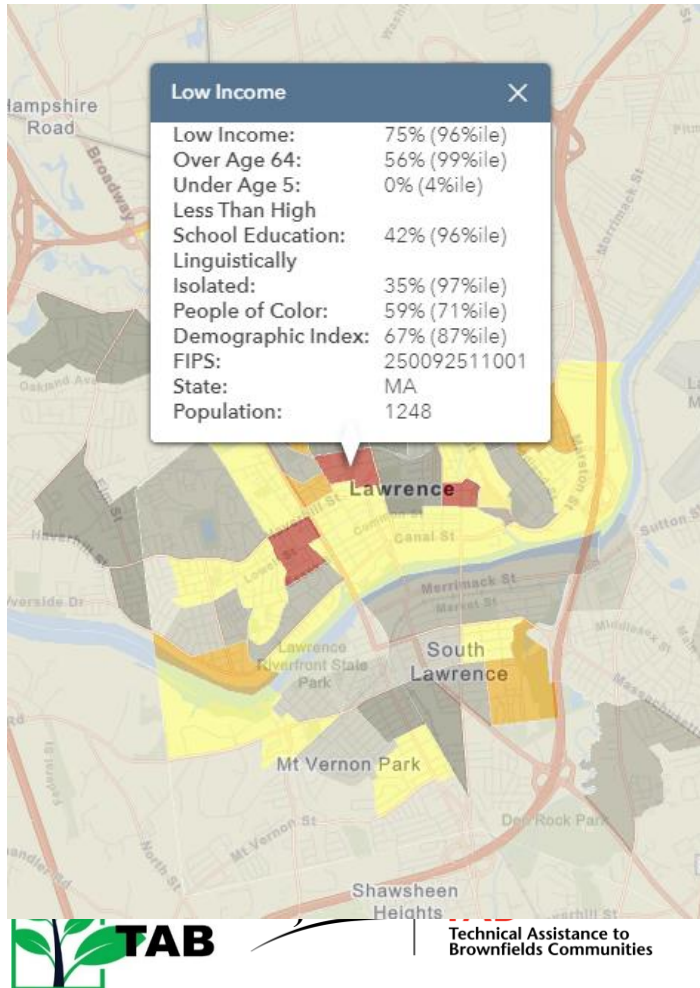
Heart Disease

- Heart disease prevalence among adults (EJSCREEN)
- [PLACES](#) database

Asthma

- Asthma prevalence among adults (EJSCREEN)
- [PLACES](#) database

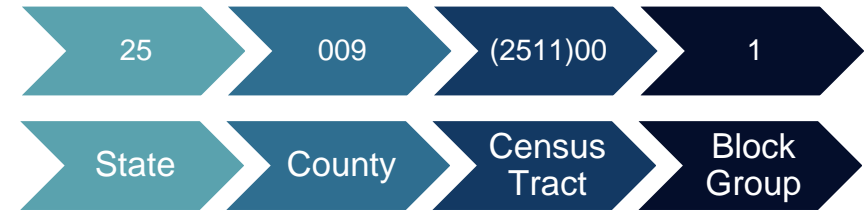
EJSCREEN



- Compare to US Compare to State
- Environmental Justice Indexes
 - Pollution and Sources**
 - Particulate Matter 2.5
 - Ozone
 - 2017 Diesel Particulate Matter
 - 2017 Air Toxics Cancer Risk
 - 2017 Air Toxics Respiratory HI
 - Traffic Proximity
 - Lead Paint
 - Superfund Proximity
 - RMP Facility Proximity
 - Hazardous Waste Proximity
 - Underground Storage Tanks
 - Wastewater Discharge
 - Socioeconomic Indicators
 - Health Disparities
 - Climate Change Data
 - Critical Service Gaps
 - More Demographics

[UConn TAB webinar on EJSCREEN](#)

Federal Information Processing Series (FIPS)



Frequently only the first four digits of the tract are used (when the last two digits are zero), except when it is 2511.01 and 2511.02 as two separate tracts



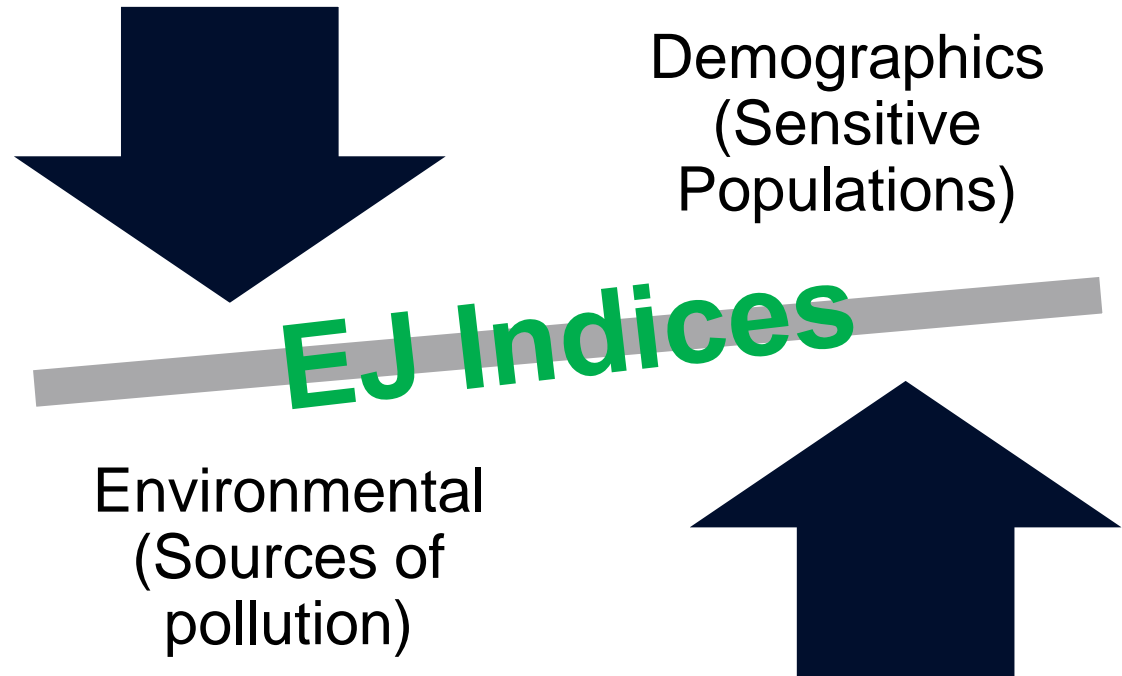
Technical Assistance to Brownfields Communities



CENTER FOR CREATIVE LAND RECYCLING
RECLAIM. CONNECT. TRANSFORM.

Threats to Sensitive Populations

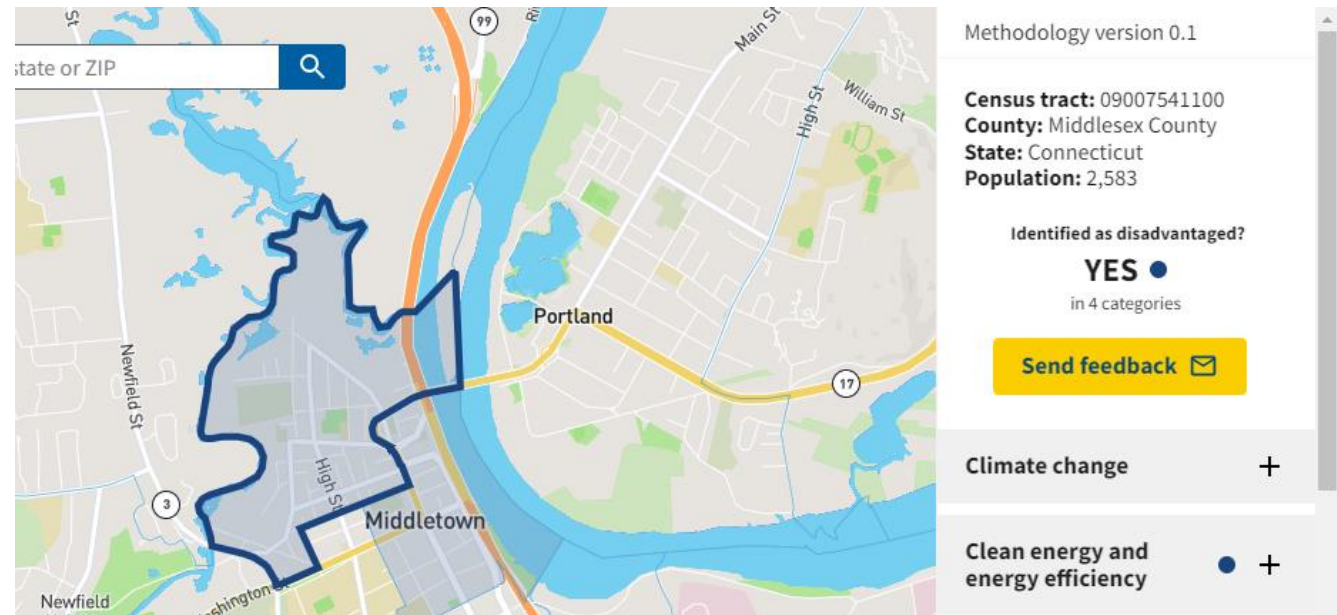
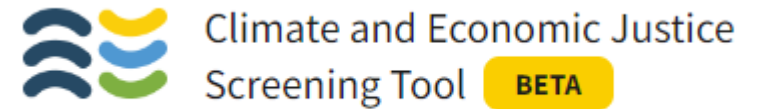
Promoting Environmental Justice



Threats to Sensitive Populations

Promoting Environmental Justice

Use the CEJST map to see communities that are identified as disadvantaged



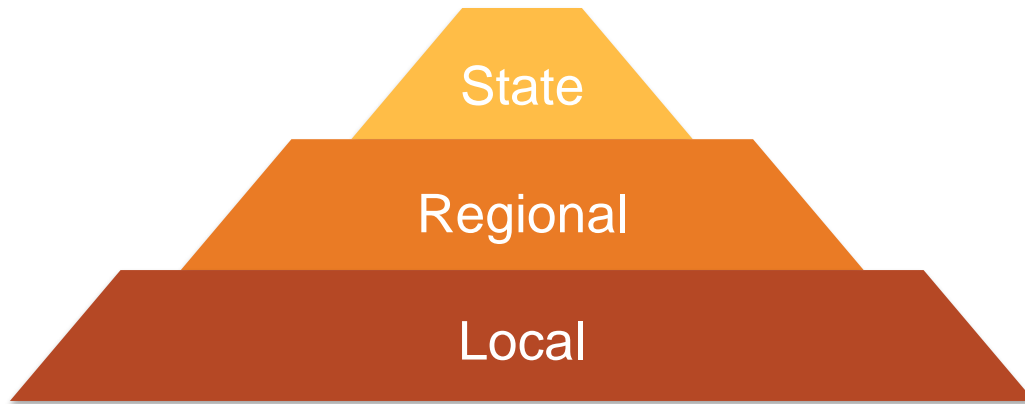
Community Engagement

Project Involvement

Project Roles

Incorporating Community Input

Identify Partners



Examples

- ✓ Faith-based organizations
- ✓ Chamber of Commerce
- ✓ Local Health Department
- ✓ Citizen Groups



Project Roles

- Identify different types of partners
- Explain how each type is relevant to the project
- Identify key contacts
- Identify type of input solicited from each partner

NEW in FY23!
For Assessment & Multipurpose Grants
 Identify one community liaison per target area (paid liaison position)

Examples of Community Partner Roles:

- ✓ Participate on the advisory committee
- ✓ Community liaison
- ✓ Community engagement through neighborhood surveys and meetings
- ✓ Host public meetings
- ✓ Provide Risk Communication
- ✓ Provide input on the identification of sites/reuse scenarios

Name of Organization/Entity/ Group	Point of Contact	Specific Involvement

Use the recommended Table!



Incorporating Community Input

- Have a PLAN!

Examples:

- Form an Advisory Committee with project partners
- Meeting schedule and modality
- Communicate project progress
- Help disseminate material via social media, newsletters and other events
- Solicit public input in a meaningful way

Tailor, tailor, tailor..

For Assessment Activities:

- *Develop vision for specific site reuse*
- *Engage neighborhood in planning (charrettes)*
- *Communicate assessment results and public health risks to public*

For Cleanup Activities:

- *Refine vision for specific site reuse (add details if they don't exist)*
- *Engage neighborhood in specific decisions (e.g. parking, lighting, aesthetics, noise mitigation)*



SECTION IV.E.3

TASK DESCRIPTIONS, COST ESTIMATES, MEASURING PROGRESS

Description of Tasks/Activities and Outputs

SECTION E.3 TASK DESCRIPTIONS, COST ESTIMATES & MEASURING PROGRESS

Cost Estimates and Development of Costs has been consolidated into one criterion

Point/Percentage Distributions HAVE CHANGED

Assessments:

Community-Wide: 28% 30.3%
Coalition/States & Tribes: 28 29.41%

Cleanup: 33% 30.56%

RLF: 37% 35.90%

Multipurpose: 28.57%

Highest Points are in this Section; same in Project Area Description for Cleanup Grants



Section E.3. TASK Descriptions

TASKS	WHAT?	Program Management, Community Outreach, Cleanup, Reuse Planning, RLF Operations, etc.
IMPLEMENTATION	How?	Develop, procure, manage, execute... (Action Verbs!)
SCHEDULE	When?	By 2nd quarter, By end of 2 nd year, etc.
LEAD	Who?	County, City, QEP, Consultant, Project Dir., etc.
OUTPUTS	Metrics?	Executed MOA, 20 quarterly reports, at least four ACRES property profiles, Fund Manager Agreement, Underwriter and Appraisal contracts, CIP, community input, etc.

Section E.3. TASK Descriptions (Example)

Task 1 – Grant Management	Lead: The City with support from the QEP
<p>Implementation: 1) Cooperative Agreement compliance oversight; 2) quarterly progress reporting; 3) annual disadvantaged business enterprise (DBE) and federal financial report (FFR) reporting; 4) entries in the EPA Assessment, Cleanup and Redevelopment Exchange System (ACRES) database; 5) Grant Closeout Report summarizing accomplishments, expenditures, outcomes, outputs, lessons learned and resources leveraged; and 6) City participation in brownfield conferences/workshops.</p> <p><i>Non-EPA grant resources will include 133.3 hours (\$10,000) of in-kind City personnel/fringe and costs and costs for travel to one local and one national conference (\$1,978).</i></p>	
<p>Schedule: Quarterly and annual reporting; ACRES entries when cleanup is complete; Closeout reporting at completion of cleanup; Conferences workshops will be attended during the grant term.</p>	
<p>Outputs: Attend 1 conference and 1 workshop; Quarterly progress reports with budget and schedule status; annual reports; ACRES reporting; and Grant Closeout Report.</p>	
Task 2 – Community Outreach	Lead: The City with support from the QEP.
<p>Implementation: 1) Three milestone community meetings (virtual or in-person, as COVID policies allow) during the grant term; 2) outreach materials including fact sheets, press releases, and City website/Facebook page updates; and 3) solicitation and responses to community input.</p> <p><i>Non-EPA grant resources will include 114 hours (\$8,550) of in-kind City personnel/fringe.</i></p>	
<p>Schedule: Public meetings will be held after grant award, when cleanup plan is final, and after cleanup is complete; outreach materials will be made available before cleanup; input will be gathered at community events and when provided directly to City via email, Facebook post, or other method.</p>	
<p>Outputs: At least 3 community meetings held and notes/presentation materials developed; 2-3 project fact sheets and signs; project updates on City’s and Theatre’s websites.</p>	



Section E.3. Cost Estimates

Assessment: watch admin. costs!; allocating at least 40-70%* of funds to site-specific work/site-specific cleanup planning will be evaluated more favorably

Community-wide Assess/State & Tribes: cost estimates that are not reasonable or realistic to implement will be evaluated less favorably

- ESTIMATES FOR EACH TASK (HOW)
- PRESENT COSTS/UNIT (where approp.)
- BE SPECIFIC, e.g. \$ in Travel, Supplies; who? what? purpose?
- REALISTIC & IMPLEMENTABLE
- CORRELATION TO TASKS

* Depending on type: 40% (CW); 60% (ST/TR; Coal.); 70% (MP)



Section E.3. Cost Estimates (Example)

3.b. Cost Estimates: The overall budget is summarized in the following table. 89% of funding is allocated towards Phase I/II ESAs & RBM Surveys. No indirect or other costs are requested.

Line #	Budget Categories	Task 1 CA Management, Reporting	Task 2 Community Engagement & Site Selection	Task 3 ESAs & RBM Surveys	Task 4 Cleanup/Reuse Planning	Totals
1	Personnel	\$0	\$0	\$8,360	\$0	\$8,360
2	Fringe	\$0	\$0	\$3,640	\$0	\$3,640
3	Travel	\$10,000	\$0	\$0	\$0	\$10,000
4	Supplies	\$0	\$1,000	\$0	\$0	\$1,000
5	Contractual	\$0	\$9,000	\$536,000	\$30,000	\$575,000
6	Other	\$2,000	\$0	\$0	\$0	\$2,000
7	Total Budget	\$12,000	\$10,000	\$548,000	\$30,000	\$600,000

CA = Cooperative Agreement; ESA = Environmental Site Assessment; RBM = Regulated Building Material.



Section E.3. Cost Estimates (Example)

The following tables provide a summary of the estimated costs for project outputs by task and budget category.

Task 1 – CA Management, Reporting & Other Eligible Activities: Total Budget = \$12,000
Travel Costs of \$12,000 are budgeted for expenses for up to 4 Coalition members to attend 2 brownfield conferences and/or workshops each. Costs are estimated at \$1,500/person/conference based on recent conference costs of approximately \$400 airfare, \$500 hotel, \$350 incidentals, \$250 registration per event.
Task 2 – Community Engagement & Site Selection: Total Budget = \$10,000
Supply Costs of \$1,000 are budgeted for expenses for outreach materials, supplies and communications. Contractual Costs of \$9,000 are budgeted (60 hrs @ \$150/hr) for assisting with engagement activities, including updating the CIP, fact sheets, stakeholder engagement and participation in select meetings.
Task 3 – ESAs & RBM Surveys: Total Budget = \$548,000
Personnel (\$42/hr) + Fringe Benefit (43.5%) Costs of \$12,000 (200 hrs @ a combined \$60/hr) for the Quality Assurance Manager (QAM) to provide QA/QC support. Contractual Costs of \$536,000 include costs for 24 Phase I ESAs (\$5,250 each = \$126,000); 20 QAPPs/SAPs (\$2,500 each = \$50,000); 10 Phase II ESAs (\$30,000 each = \$300,000); 10 RBM surveys (\$6,000 each = \$60,000).
Task 4 – Site-Specific Cleanup and/or Reuse Planning: Total Budget = \$30,000
Contractual Costs of \$30,000 are estimated based on 10 RAPs/Reuse Plans at an avg. cost of \$3,000/site.



Section E.3. Measuring Progress

THREE THINGS TO KEEP IN MIND:

1. TRACKING
2. MEASURING
3. EVALUATING

- MEETINGS/MINUTES
- QUARTERLY & ANNUAL REPORTS
- STATISTICS/DATA
- MILESTONES/BENCHMARKS
- SHOW YOU CAN PIVOT



Source: Klipfolio.com



Section E.3. Measuring Progress (Examples)

3.c. Measuring Environmental Results: **Outputs and short- and long-term outcomes** will be tracked in ACRES, reported through Quarterly Progress Reports (QPRs) and the Grant Closeout Report. QPRs will list goals accomplished and upcoming activities. Significant Work Plan deviations will be discussed with the EPA Project Officer to develop corrective actions. Between meetings and QPRs, **outputs** will be tracked including: (1) # of brownfields identified/prioritized; (2) # of Phase I ESAs; (3) # of Phase II ESAs; (4) # of Analysis of Brownfield Cleanup Alternatives (ABCAs) and/or Remedial Action Plans (RAPs); and (5) # of community meetings and success stories. The following **short- and long-term outcomes** will be tracked: (1) # of sites/acres ready for reuse; (2) # of sites/acres of land redeveloped; (3) # of acres of greenspace created; (4) \$ of private investment/leveraged funding; (5) # of jobs created or retained; and (6) # of affordable housing units created. The City will refine the project schedule/milestones as part of the Work Plan to ensure activities are completed within the three-year period. The City will continue to update ACRES beyond the project end date to ensure outcomes continue to be captured.



SECTION IV.E.4

PROGRAMMATIC CAPABILITY AND PAST PERFORMANCE



Section E.4 Programmatic Capability

i. *Organizational Capacity – Discuss the applicant’s organizational capacity for carrying out **and managing** the programmatic, administrative, and financial requirements of the project and grant.*

- BE SPECIFIC
- WHO? KEY STAFF
- EXPERIENCE
- SUPPORT AND RESOURCES
 - REMEMBER! Be careful about naming consultants here. Describe your plan to acquire contractors/consultants in a manner that complies with the EPA’s solicitation clauses
- TEAM EFFORT



Section E.4. Programmatic Capability

“County staff have successfully managed many Federal, State and local grants and loans, including a past brownfields grant. Staff members have the technical and administrative skills to manage and ensure the project meets all timelines, budget and key goals are accomplished. The County has extensive experience with EJ issues and redevelopment efforts that align with planning initiatives and have the support of local stakeholders.”

Awesome City’s Community Dev. Dept. will manage this grant. It has previously managed \$40M in grants in the past 7 years, including those listed in 4.b.ii(1). Sally Superstar, Brownfields Program Manager, will serve as Project Manager and oversee the day to day operations and has been with the City for over 18 years. She will be assisted by Austin Awesome, Community Engagement Specialist, who holds a Master’s in Public Administration and has 10 years’ of planning and economic development experience. With over 15 years of federal grant management experience, Faith Fantastic, Finance Manager, will oversee all financial reporting, accounting and procurement in conformance with 2CFR 200.317-326.

Source: J. Greenland, 2021

Section E. Past Performance (4.b)

- ❑ DON'T BE MODEST...but don't give more than 3 examples
- ❑ USE TABLES TO SAVE SPACE
 - FUNDING SOURCE
 - PROJECT/AMOUNT REC'D/USED
 - OUTPUTS AND OUTCOMES
 - CATALYTIC? LEVERAGED OTHER RESOURCES?
- ❑ COMPLIANCE RECORD – SHOW COMPETENCY & ANTICIPATE SUCCESS OUTCOME IF STILL MANAGING

Address all the criteria. If you have no history, then say that for neutral score of 8 points. Not responding will give you 0.



Toot your own horn (life.com)

Section E.4. Past Performance

“The City presently has or had EPA brownfields grants as well as an EDA grant. FY18 Assessment Grant (rec'd extension); generic QAPP, 14 Phase I's, 7 Phase II's, 1 cleanup plans; 9 quarterly reports, ACRES reporting; financial reports; 14 sites and 47 acres ready for use. NotSoSure EDC estimates that the planned redevelopment will result in hundreds of new residential units (some affordable), over 400 FTE jobs and millions of funds leveraged. ”

Since 1988, the City has secured and effectively utilized multiple Federal and EPA Brownfields Grants. The status of the City's most recent EPA grants is:

1. FY14 Community-Wide Assessment | CA #BF-00F90901 | \$400K | 10/1/14-17 (closed);*
2. FY16 RLF | CA # BF01F21301 | \$820,000 | Open*
3. CDBG | Low/Mod Income Housing Rehab | \$700K*

***Outputs:** one Quality Management Plan, nine Quality Assurance Project Plans, 22 Phase 1 ESAs, 8 Phase 2 ESAs; 12 Quarterly Reports; 3 DBEs and 3 FFRs;

***Outcomes:** 8 sites and 38.45 acres were designated as ready for use; redevelopment resulted in 813 jobs and leveraged \$100M; 122 safe and affordable senior housing units constructed

Source: J. Greenland, 2021

TECHNICAL ASSISTANCE TO BROWNFIELDS COMMUNITIES (TAB) RESOURCES

TECHNICAL ASSISTANCE TO BROWNFIELDS COMMUNITIES (TAB) RESOURCES

- Examples of Previous Successful MARC Grant Applications
- TAB EZ – Grant Writing Software Tool
- Review of Draft ARC Grant Applications



TABEZ ONLINE GRANT WRITING TOOL

- Template for EPA Brownfields Multi-Purpose, Assessments, Cleanup, and RLF Grant Applications
- Updated for the FY23
- Includes reminders and helpful hints, and links to federal resources
- <https://www.ksutab.org/tools/tabbez/learnmore>

ksutab.org/tools/tabbez/Grant_Applications/Grant_Applications_Home.php?aid=2876&action=disable

Apps Sign in | Kansas Sta... KSU TAB Program DevelopmentBrown... StagingKSUTAB Welcome To Livia... National BF Conf.Ev... MI State Resources Tribal Brownfields F... Homepag

TAB TECHNICAL ASSISTANCE TO BROWNFIELDS Home About Education **Online Tools** Resources Services Contact

In This Section:

- Grant Applications Home
- Start New Application

Quick Links:

- Sample Grant Applications
- Tutorial
- Definitions
- Acronyms
- All Assessment Helpful Hints
- All Cleanup Helpful Hints
- Statistics/Census Information

Grant Applications Home **Please Read!**

Home > Grant Applications Home

My Grant Applications			
Application Name:	Owner:	Last Contributor:	Date:
New Website Testing 07/2019	Maggie Weiser	Maggie Weiser	07/17/2019
FY20 Downtown	Maggie Weiser	Maggie Weiser	07/14/2019
Cleanup TABEZ Follow Up - Feb.19	Maggie Weiser	Maggie Weiser	02/06/2019
Assessment TABEZ Follow Up - Feb.19	Maggie Weiser	Maggie Weiser	02/05/2019
C2 FY19	Sheree Walsh	Sheree Walsh	12/20/2018

Start A New Grant Application How Do I Start A Grant Application? Sample Grant Applications



Example of how Threshold Criteria Varies by Grant

Application Configuration

Manage Participants

Grant Content

- IV.D. Narrative Information Sheet ▼
- IV.E. Narrative/Ranking Criteria (and Evaluation Criteria) for Assessment Grants ▼
- III.B Threshold Criteria for Assessment Grants ▲
 - III.B.1. Applicant Eligibility
 - III.B.2. Community Involvement
 - III.B.3. Named Contractors and Subrecipients
 - III.B.4. Expenditure of Assessment Grant Funds
- III.C. Additional Threshold Criteria for Site-Specific Applications Only ▼
- III.D. Additional Threshold Criteria for Community-wide Assessment Grants for States and Tribes Only

Export to Word

Total Character Count: **3268**

Application Configuration

Manage Participants

Grant Content

- IV.D. Narrative Information Sheet ▼
- IV.E. Narrative/Ranking Criteria for Cleanup Grants ▼
- III.B. Threshold Criteria for Cleanup Grants ▲
 - III.B.1 Applicant Eligibility
 - III.B.2 Previously Awarded Cleanup Grants
 - III.B.3 Expenditure of Existing Multipurpose Grant Funds
 - III.B.4 Site Ownership
 - III.B.5 Basic Site Information
 - III.B.6 Status and History of Contamination at the Site
 - III.B.7 Brownfields Site Definition
 - III.B.8 Environmental Assessment Required for Cleanup Applications
 - III.B.9 Enforcement or Other Actions
 - III.B.10 Sites Requiring a Property-Specific

Application Configuration

Manage Participants

Grant Content

- IV.D Narrative Information Sheet ▼
- IV.E. Narrative/Ranking Criteria (Evaluation Criteria) for Multipurpose Grants ▼
- III.B. Threshold Criteria for Multipurpose Grants ▲
 - III.B.1. Applicant Eligibility
 - III.B.2. Community Involvement
 - III.B.3. Target Area
 - III.B.4. Affirmation of Brownfields Site Ownership
 - III.B.5. Use of Grant Funds
 - III.B.6. Required Cost Share

Export to Word

Total Character Count: **0**

Application Configuration

Manage Participants

Grant Content

- IV.D. Narrative Information Sheet ▼
- IV.E. Narrative/Ranking Criteria (and Evaluation Criteria) for RLF Grants ▼
- III.B. Threshold Criteria for RLF Grants ▲
 - III.B.1. Applicant Eligibility
 - III.B.2. Demonstration of Previous RLF Grant Status
 - III.B.3. Expenditure of Existing Multipurpose Grant Funds
 - III.B.4. Description of RLF Boundaries
 - III.B.5. Oversight Structure and Legal Authority to Manage a Revolving Loan Fund
 - III.B.6. Statutory Cost Share ▼

TAB EZ Screen Example for Criteria

Overview of Brownfield Challenges and Description of Target Area

Identify the geographic boundary where you are proposing to conduct eligible activities under this grant and discuss the brownfield challenges and their impacts. Provide a brief overview of how this grant will potentially help address those challenges and impacts.

Within the geographic boundary discussed above, identify and describe the specific target area where you plan to focus grant activities, such as a neighborhood or a census tract.

Evaluation Criteria

This section is worth 5 points. Your application will be evaluated on the quality and extent to which it addresses:

The extent to which the geographic boundary where the applicant is proposing to conduct eligible activities under this grant is clearly identified. The extent to which the brownfield challenges impact the area in the geographic boundary. The extent to which this grant will potentially help address those challenges.

The extent to which the applicant clearly identifies and describes the specific target area within the geographic boundary where it plans to focus grant activities.

HELPFUL HINTS

Paragraph **B** *I* @ := :: ☰ “ ↶ ↷

For this project, the Town's Targeted Area encompasses census tract 504.01(a certified Opportunity Zone (OZ)). It is bound to the South by a 3-mile stretch of the Ohio River, Silver Creek to the west, east is Highway US 31/I-65 and north is SR 62. Targeted Area residents live in modest neighborhoods adjacent to 400 acres of brownfields consisting of junkyards, auto salvage, recycling, open dumps, and other industrial uses. Clark community and catholic schools are located just blocks away from the Targeted Area. Many of these brownfields are magnets for vandalism, crime, illicit drug use, and the homeless population. The EPA Funding offered by this grant is critical for conducting a brownfields sites for the development of the iconic urban ORIGIN park on the Ohio River. The EPA Funding offered by this grant is critical for conducting a brownfields sites for the development of the iconic urban ORIGIN park on the Ohio River. The EPA Funding offered by this grant is critical for conducting a brownfields sites for the development of the iconic urban ORIGIN park on the Ohio River. Transformation of the area with its riverfront heritage as well as the significant cultural and civic assets for the region.

Last Edited: 10/3/2022 11:04 AM by Beth Grigsby

Save Save And Complete

Add Comment • View Section Revisions

Narrative/Ranking Criteria (Evaluation Criteria) for Multipurpose Grants

IV.E.1. Project Area Description and Plans for Revitalization

IV.E.1.a. Target Area and Brownfields

IV.E.1.a.i. Overview of Brownfield Challenges and Description of Target Area

For this project, the Town's Targeted Area encompasses census tract 504.01(a certified Opportunity Zone (OZ)). It is bound to the South by a 3-mile stretch of the Ohio River, Silver Creek to the west, east is Highway US 31/I-65 and north is SR 62. Targeted Area residents live in modest neighborhoods adjacent to 400 acres of brownfields consisting of junkyards, auto salvage, recycling, open dumps, and other industrial uses. Clark community and catholic schools are located just blocks away from the Targeted Area. Many of these brownfields are magnets for vandalism, crime, illicit drug use, and the homeless population, thus, since 2011, the Town

IV.E.1.a.ii. Description of the Priority Brownfield Site(s)

For this project, the Town's Targeted Area encompasses census tract 504.01(a certified Opportunity Zone (OZ)). It is bound to the South by a 3-mile stretch of the Ohio River, Silver Creek to the west, east is Highway US 31/I-65 and north is SR 62. Targeted Area residents live in modest neighborhoods adjacent to 400 acres of brownfields consisting of junkyards, auto salvage, recycling, open dumps, and other industrial uses. Clark community and catholic schools are located just blocks away from the Targeted Area. Many of these brownfields are magnets for vandalism, crime, illicit drug use, and the homeless population, thus, since 2011, the Town

IV.E.1.b. Revitalization of the Target Area

IV.E.1.b.i. Overall Plan for Revitalization

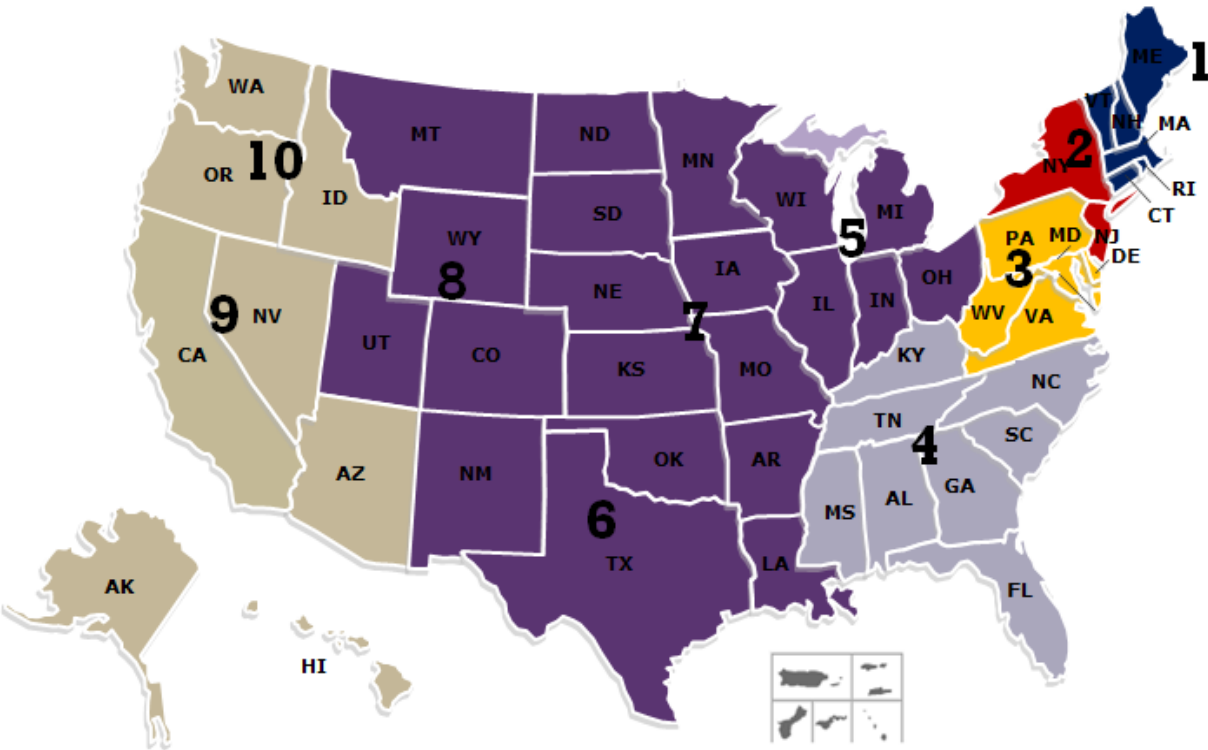
1. The 2011 Master Plan for the West Riverfront (located in the Targeted Area) led by the Clarksville Historic Preservation Commission began with a year- The Town's overriding health and welfare concern for its community is the concentration of brownfield revitalization in the Targeted area. Remediating the brownfields will mitigate the impact these sites pose on **IV.E.1.c. Strategy for Leveraging Resources**

IV.E.1.c.i. Resources Needed for Site Reuse

1. Strategy for Leveraging Resources-1.c.i. Resources Needed for Site Reuse: The Town has extensive expertise in leveraging and developing partnerships that bring resources to our projects. The Town has leveraged the \$2.37 MM 1.9-mile Discovery Trail utilizing the EPA grant and the Indiana Department of Resources (IDNR) \$840,000 Next Level Trails state grant. The EPA conducted a \$1.5 M time critical removal action at the Graveyard Auto (see 1.a.i), provided a Targeted Brownfield Assessment at 513 Emery Crossing Road in 2010 and awarded the Town's Coalition the \$440,000 FY2018 EPA |

Exported to Word

TAB PROVIDERS



TAB service providers (with clickable links)

- [Kansas State University](#) assists communities in EPA Regions 5, 6, 7 & 8
- [Center for Creative Land Recycling \(CCLR\)](#) assists in EPA Regions 9 and 10
- [New Jersey Institute of Technology \(NJIT\)](#) assists in EPA Region 2
- [University of Connecticut](#) assists in EPA Region 1
- [The West Virginia University Research Corporation](#) assists in EPA Region 3
- [The International City/County Management Association](#) assists in EPA Region 4



UConn TAB

Technical Assistance Region 1

EPA FY23 ARC Grant Proposal Review

- Oct 25th – 1st round of review: Feedback on how the narrative proposal addresses EPA's guidelines, and resources to identify data and address comments. Reviews will be provided in a written format, as an annotated document of your submitted text.
- Nov. 8th – 2nd round of review: After the feedback of the 1st round of review is addressed, the 2nd round will provide additional feedback to fine-tune the narrative and provide feedback on the complete application package.

You may request the review through UConn TAB's [submission form](#).

Visit our website <https://tab.program.uconn.edu/>
Or email us at uconn-tab@uconn.edu





FREE assistance and guidance on EPA's brownfield grant guidelines and applications, or a grant application critique!

Please submit your grant critique request by close of business **November 8th**. Please submit applications in **Word** format along with EPA debrief if applicable.

CONTACT US!

- Hotline: (973) 596-6415
- email: tab@njit.edu



WVU TAB CONTACT INFORMATION

Carrie Staton

Katie See

wwutab@mail.wvu.edu

**Deadline to Submit
to WVU for Review**

November 1, 2022



WVU TAB'S KEY RESOURCES INCLUDE:

- Brownfield Education
 - Trainings, webinars, events
- Resource Identification
 - Grant writing assistance, grant review, resource road maps
- Support
 - Brownfield inventory development, questions on sites, technical support
- Project Development & Design Assistance
 - Site-specific assistance, design support from WVU Davis College



ICMA Region 4

Region 4 ARC Proposal Reviews

Deadline – November 1, 2022

Direct Technical Assistance

- ▢ Tailored Assistance
- ▢ Redevelopment Strategies
- ▢ Stakeholder Engagement
- ▢ Education and Training
- ▢ Capacity Building
- ▢ Subject Matter Expertise

Clark Henry (910) 386-1540

chenry@icma.org



KANSAS STATE UNIVERSITY TECHNICAL ASSISTANCE TO BROWNFIELDS (TAB PROVIDER FOR EPA REGIONS 5, 6, 7, & 8)

Free review of FY23 MARC Draft Grant Applications

- Review and comments provided in ≤ 3 working days.
- First come, first serve – November 15 will be the last day receiving draft applications.
- Contact Maggie Belanger, maggiejessie@ksu.edu to schedule a review.



CENTER FOR CREATIVE LAND RECYCLING (CCLR)

Send to:

☐ **Joelle Greenland** - joelle.greenland@cclr.org

☐ **Ignacio Dayrit** - Ignacio.Dayrit@cclr.org

November 22nd deadline for review



AVAILABLE TAB RESOURCES

USEFUL WEBSITES & RESOURCES

- EPA MARC Grant Application Resources (Grant Guidelines, Summary of Changes, Slides from EPA Webinars) - <https://www.epa.gov/brownfields/multipurpose-assessment-rlf-and-cleanup-marc-grant-application-resources#General%20Program%20Resources>
- FAQs about MARC Grants – <https://www.epa.gov/brownfields/frequently-asked-questions-about-multipurpose-assessment-rlf-and-cleanup-grants>
- TAB EZ - <https://www.ksutab.org/tools/tab ez/learnmore>



FINAL NOTES

Thank you for participating in today's webinar!

Note: "This project has been funded wholly or in part by the United States Environmental Protection Agency under the following assistance agreements: New Jersey Institute of Technology (TR-83683001), Kansas State University (TR-83684001), University of Connecticut (TR-00A01005-2), Center for Creative Land Recycling (TR-83682001), West Virginia University, and ICMA. The contents of this document do not necessarily reflect the views and policies of the Environmental Protection Agency, nor does the EPA endorse trade names or recommend the use of commercial products mentioned in this document."



ANY QUESTIONS?

